


This infographic is part of a series that explores health from the perspectives of different populations. Developed using health survey data, they collectively demonstrate Coloradans' varying experiences of health and health care.



1 in 38 Coloradans
identifies as LGBT

Colorado has around
135,000 LGBT residents*

*Includes individuals who identify as lesbian, gay, bisexual, or transgender

Colorado's LGBT
Population:

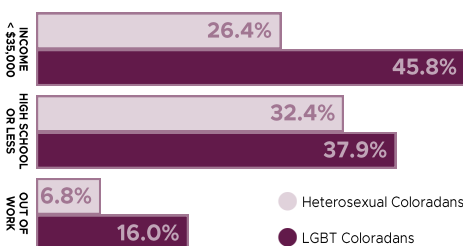
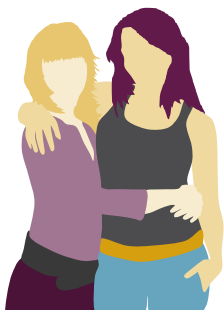
55%

45%

Lesbian & Gay Bisexual, Transgender & Other

LGBT Coloradans **are at an increased risk of poor health** due to a variety of social factors

LGBT Coloradans are more likely to have **low incomes, low educational attainment, and be unemployed**



21% of LGBT Coloradans are in fair or poor health, compared to **12% of Heterosexual Coloradans**

It is **more difficult** for lesbian, gay, bisexual, and transgender adults **to access health care**

Nationally, LGBT people are **more likely to be uninsured and delay or forgo care:**

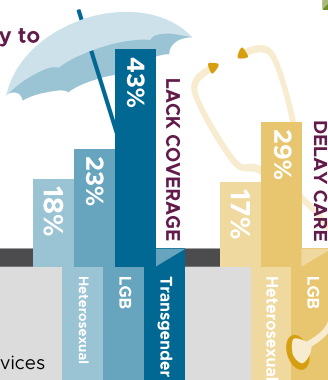
LGBT families cannot access some rights, such as a medical power of attorney, without legal action.

THREE



out of FOUR
LGBT Coloradans

view legal fees as a barrier to health care services



The health of LGBT Coloradans is affected by the **lack of good patient-provider relationships**



LGBT Coloradans with an LGBT-Friendly Provider

VS.



LGBT Coloradans without an LGBT-Friendly Provider

79%	Had an annual check-up	49%
61%	Had an annual dental visit	45%
58%	Had an annual flu shot	40%



21%

report that health care workers have refused services to LGBT

Social and cultural factors affect the ability of lesbian, gay, bisexual, and transgender Coloradans to get and stay healthy. We must work to ensure all Coloradans have the ability to access to the care they need, when they need it.

Sources:

Center for American Progress (2009): <http://www.americanprogress.org>
Colorado Department of Public Health & Environment (2011): <http://www.cdphe.state.co.us>
One Colorado (2012): <http://www.one-colorado.org>