



POLICY PRIORITIES

Our mission is to create opportunities and eliminate barriers to health equity for Coloradans.

2018 LEGISLATIVE AGENDA — PRIORITY INITIATIVES

In 2018, we anticipate the need for our leadership on legislation that relates to:

- **Immigrant health** – Policies that mitigate challenges in access to care for immigrants, such as I Drive legislation and budgetary items and issues concerning immigrant safety.
- **Payment reform mechanisms to include social determinants of health** – Legislation that supports payment reform, with the ability to move health care systems to support social determinants of health as prioritized by the impacted community with the end goal of improving health equity in the community.
- **Addressing the “upstream” factors in health inequities in order to more effectively improve health outcomes** – Legislation that specifically addresses social determinants of health that directly correlate with the greatest health inequities; this year, we will focus on issues related to housing and food access.

We will assert our leadership by communicating or meeting with individual legislators, sharing collateral materials to educate legislators and partners on the issues, and/or testifying on bills.

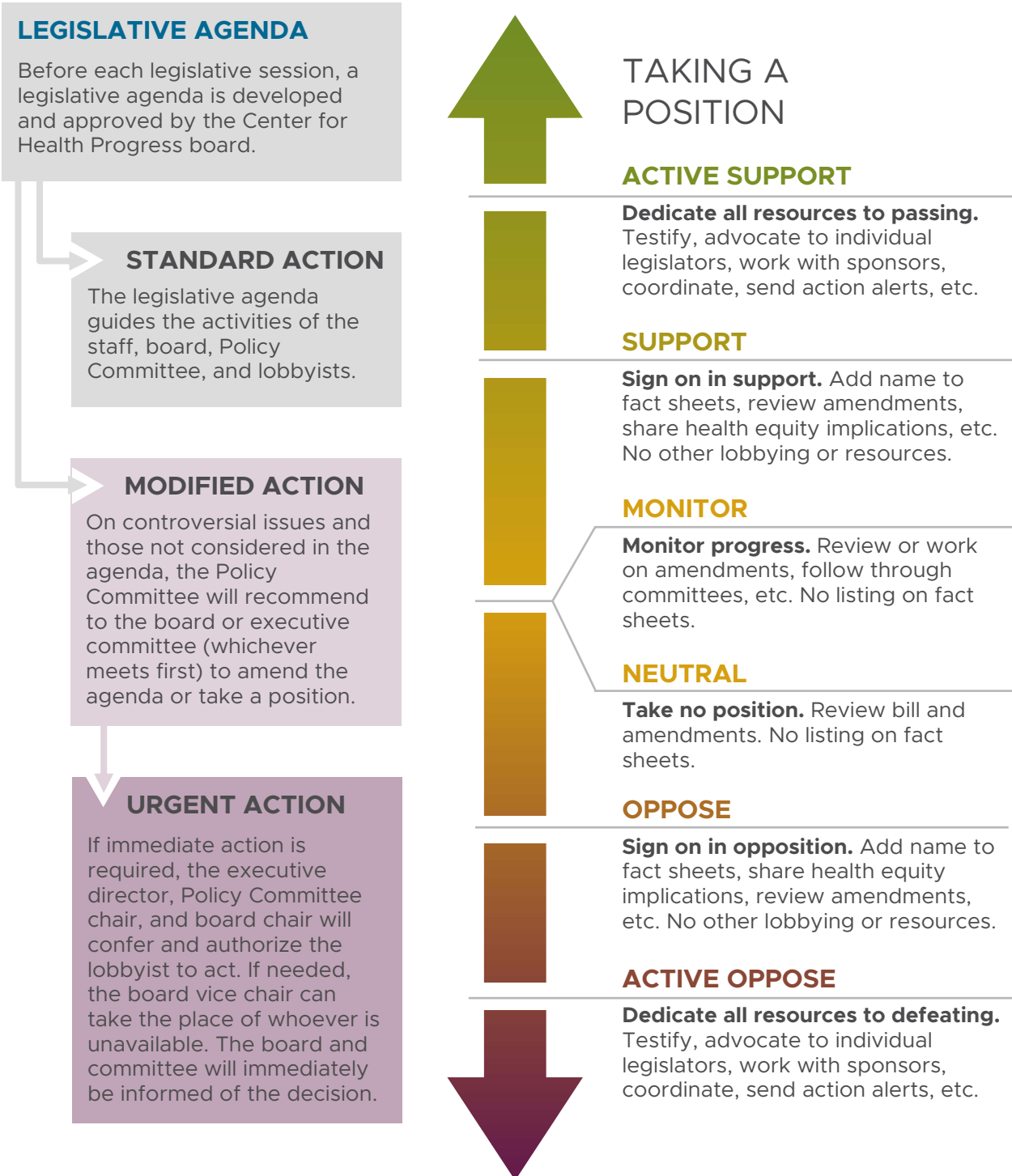
2018 SUPPORTIVE AGENDA — OTHER ISSUES

We will consider supporting beneficial legislation (and opposing harmful legislation) on other issues. Wherever possible, we will also elevate the health equity impacts of these legislation:

- **Protection of the safety net** – This includes but is not limited to protecting those who are currently eligible for Medicaid/CHP+ and financing for public coverage programs as well as for safety net access points. This also includes the alleviation of state fiscal constraints as they interfere with our ability to deliver the best services and programs for Coloradans.
- **Access to and integration of behavioral health care and oral health care** – As behavioral and oral health are critical contributors to good health outcomes, we support policies that improve access to needed services in these areas, and policies that promote parity so that behavioral and oral health care are assigned the same weight as physical health care.
- **Changes to CICP (Colorado Indigent Care Program)** – Although CICP has not and will not become a coverage program, it fills important gaps in access to care for some of the Coloradans who have been most marginalized. We anticipate changes that reflect the new coverage environment, and will support policies that ensure its ability to support our critical safety net.
- **Affordability and transparency in access to care** – We will support positive efforts to increase affordability and price transparency of health care services and benefits, such as prescription drugs and free-standing emergency rooms. We also will support efforts to increase innovative approaches to care, such as telehealth, SDOH screenings, and non-traditional workforce, as well as ensuring cultural responsiveness and diversity of the health care workforce.
- **Other social determinants of health issues** – We will support positive policies concerning literacy, language access, and safe neighborhoods as other critical social determinants of health issues.

LEGISLATIVE DECISION-MAKING PROTOCOL

MAKING DECISIONS



HEALTH EQUITY IMPACT ASSESSMENT

The following set of questions was developed by the Health Equity Advocacy Cohort of The Colorado Trust to assist organizations in assessing a potential policy (including organizational policy, local policy, regulations, legislation) for health equity impact. Health equity means that all individuals, regardless of race, gender, sexual orientation, or other personal characteristic, have equal opportunity to be healthy (achieve complete social, emotional, and physical well-being).

This document refers repeatedly to the “social determinants of health.” The social determinants of health are all of the environmental factors that influence a person’s well-being including, but not limited to, housing, food, education, economic opportunities, transportation, public safety, and social support. All users of this tool are urged to consider all impacts on individuals as a potential impact on health.

To the greatest extent possible, **affected communities should be engaged in the use of this tool to evaluate a policy.** This document is intended as a guide to generate further conversation.

- 1 What does the policy intend to accomplish? What are the arguments for and against the policy?
- 2 Does the policy have an intentional impact on health or one or more of the social determinants of health? Consider both long-term and short-term impact.
- 3 Does the policy have an unintentional impact (adverse or positive) on health or one of the social determinants of health? Consider both long-term and short-term impact.
- 4 What populations are impacted by the policy? How big is the population?
- 5 How much will the policy impact the social determinant of health in the affected population (large impact, medium impact, small impact)? What data is available? What data would be helpful that isn't available? What does the data indicate?
- 6 Will it have a different impact across races and ethnicities? Does the bill increase or reduce current disparities or support integration of people across racial, ethnic, and socioeconomic communities?
- 7 Were affected populations (i.e. communities of color) involved in the policy development? What other stakeholders are impacted and which of these stakeholders are actively engaged in the policy?
- 8 Does the policy contain processes to ensure ongoing and meaningful input from affected communities throughout the implementation process?
- 9 Does the policy have the right resources (financial and otherwise) to be effective?
- 10 Could the policy be revised to better impact the social determinants of health?
- 11 How will the implementation of the policy be monitored and evaluated? How will success be measured? Will results be measured by race and ethnicity?
- 12 What is the feasibility of changing the policy? How strong is the support for the proposed policy? For example, who are the sponsors?
- 13 Is this issue relevant to our mission?
- 14 Is the issue urgent?